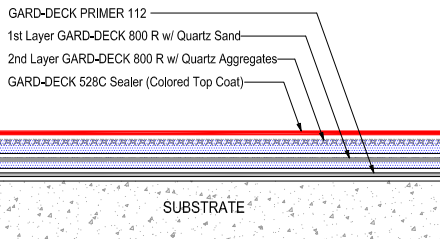
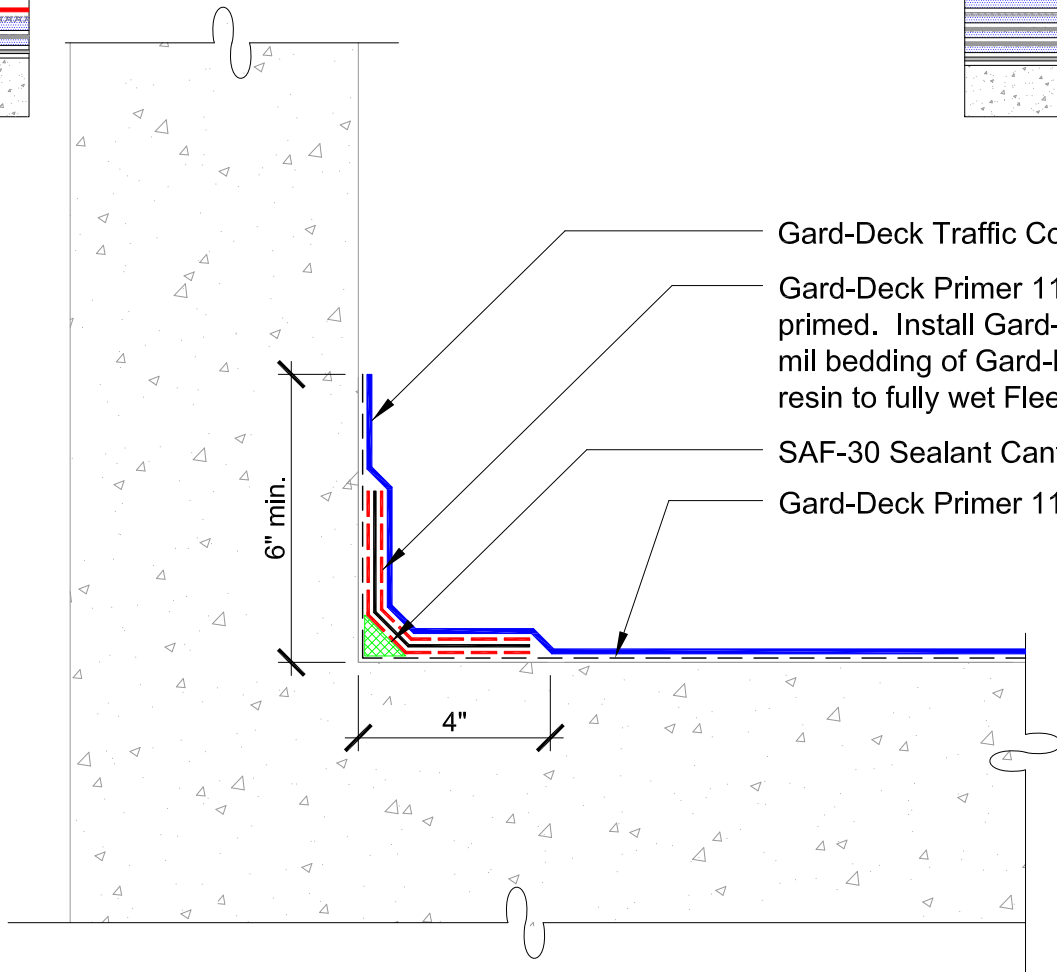
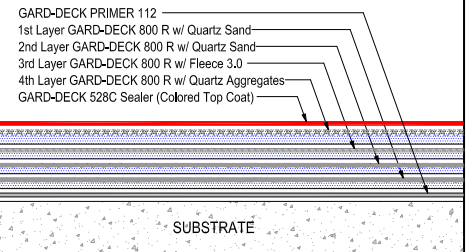


**GARD-DECK TRAFFIC COATING SYSTEM (Unreinforced)**



**GARD-DECK TRAFFIC COATING SYSTEM (Reinforced)**



Gard-Deck Traffic Coating System  
 Gard-Deck Primer 112 concrete wall to be primed. Install Gard-Deck Fleece 3.0 in 30 mil bedding of Gard-Deck 800 R, brush in resin to fully wet Fleece.  
 SAF-30 Sealant Cant/Fillet at inside corners  
 Gard-Deck Primer 112



DETAIL NAME:  
**WALL FLASHING**  
 JOB NAME:

Scale:	Date:	Drawing #:
NTS	04-17-17	GD-012